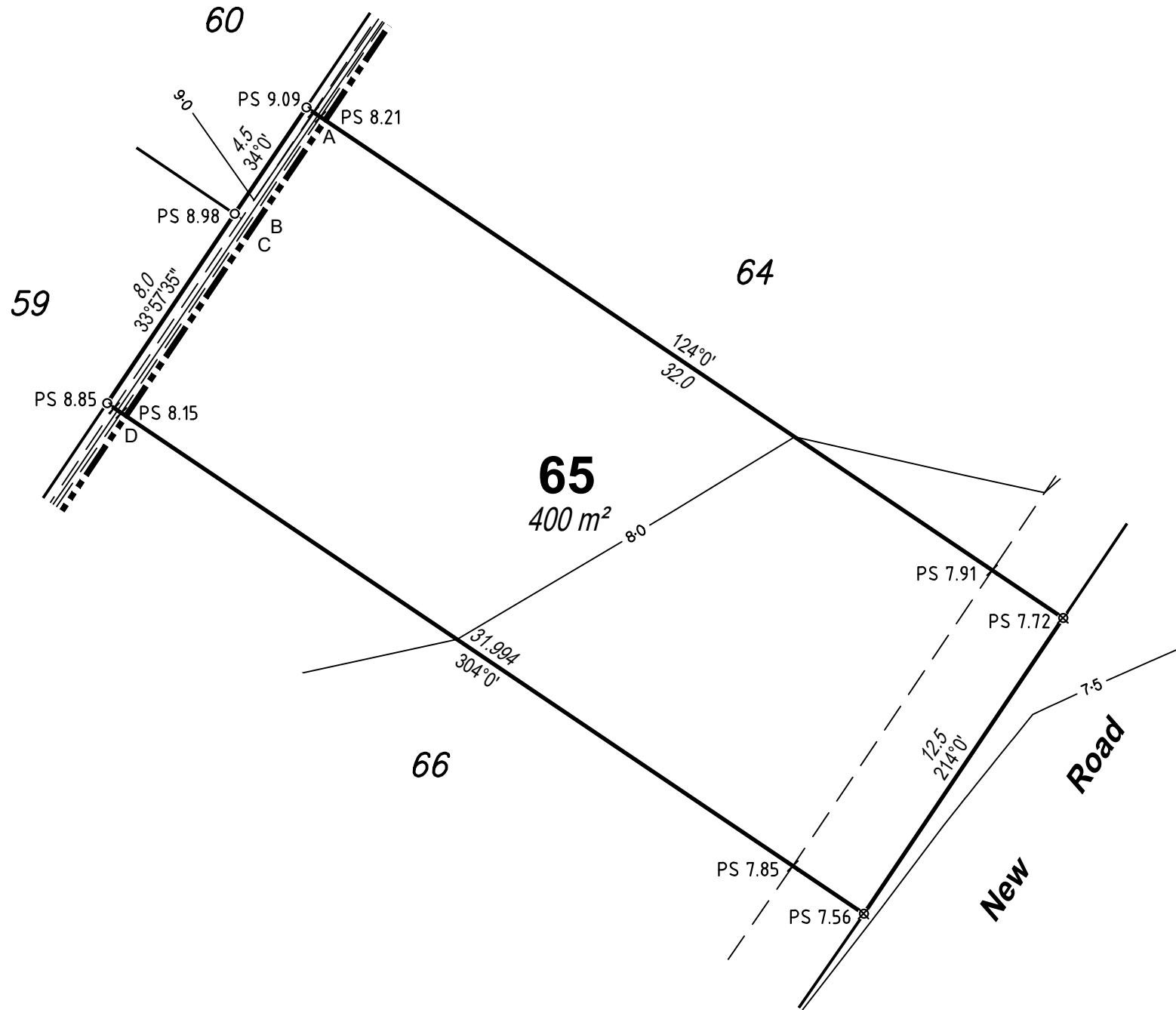


The Contractor shall complete all allotment earthwork operations in such a manner, to allow an approved Geotechnical testing company's certification that site filling has been placed as Level 1 "Controlled Fill" in accordance with the provisions of AS 3798-2007.

The frequency of control testing shall be in accordance with the provisions of Table 8.1 of AS 3798-2007.



Retaining Wall Heights	
Point	Height
A	0.84m
B	0.86m
C	0.56m
D	0.6m
A-B Average	0.85m
C-D Average	0.58m

DISCLOSURE PLAN

For Proposed Lot 65
on SP289854,
North Harbour
Stage 24

CURRENTLY DESCRIBED AS
RPD Lot 2000 on SP279975

LOCALITY Burpengary East
LOCAL AUTHORITY Moreton Bay Regional Council

Legend

Proposed Surface Contour	
Proposed Surface Level	
Proposed Earthworks Batter	
Proposed Retaining Wall	

- Notes
- Area & Dimensions are subject to Survey Plan Registration.
 - Proposed contours, fill and retaining wall details are compiled from the engineering design plans provided by KN Group Pty Ltd, received on 24/02/2017.
 - Due to plotting limitations the retaining walls shown are indicative only and may not show the true width of the wall.
 - Levels shown are referenced to the Australian Height Datum (AHD)
 - This plan was prepared to satisfy Section 11 of the *Land Sales Act QLD 1984*.
 - Builders shall not build off the design levels shown; a site survey is required.
 - There is no fill on this site.
 - These notes are an integral part of this plan.

NORTH

SCALE 1:200 SHEET SIZE A3

RPS RPS Australia East Pty Ltd
743 Ann Street
Fortitude Valley Qld 4006
t: +61 7 3237 8899
f: +61 7 3237 8833
www.rpsgroup.com.au

©COPYRIGHT PROTECTS THIS PLAN
Unauthorised reproduction or amendment
not permitted. Please contact the author.

This plan has been prepared by RPS Australia East Pty Ltd
(Cadastral Surveyor) to satisfy the requirements of the Land Sales
Act 1984.

DWG. 20430 Stage 24 Dis			SH. 1 of 1
DATE	PROJECT	PLAN	AMD.
08/03/17	20430	181/65	-