



UNITYWATER PROJECT NUMBER 2016008075S33

Stage 33, North Harbour Estate

SEWER AND WATER MAIN AS CONSTRUCTED



DRAWING INDEX	
DRAWING NUMBER	DESCRIPTION
U-2023-5207	LOCALITY PLAN AND DRAWING INDEX

COORDINATE DATUM NOTE:
 HORIZONTAL COORDINATES(E,N) SUPPLIED ARE MAPPING GRID OF AUSTRALIA(MGA), ZONE 56 BASED ON THE UNIVERSAL TRANSVERSE MERCATOR PROJECTION AND THE GEOCENTRIC DATUM OF AUSTRALIA 1994.

ENGINEER'S CERTIFICATION

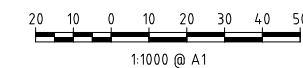
I, Mark Shaw, of KN GROUP PTY LTD, hereby certify that:
 1. The information contained in this drawing / document is in compliance with approved drawings and design.
 2. The new water and sewerage works defined by this drawing have been designed and constructed in accordance with the SEQ Code.
 3. This represents an accurate record of as-constructed works
 4. I accept responsibility for the information contained in this drawing / document.

 RPEQ (signature) RPEQ No. 17544 Date: _____

REGISTERED SURVEYOR'S CERTIFICATION

We, T.H. JENSEN BOWERS PTY LTD, hereby certify that the vertical and horizontal locations and dimensions shown on this plan are a true and correct record and were located by survey.

S.M.
 Registered Surveyor (sig) Reg. Surveyor No. 3756 Date: 14/06/2024



AS CONSTRUCTED

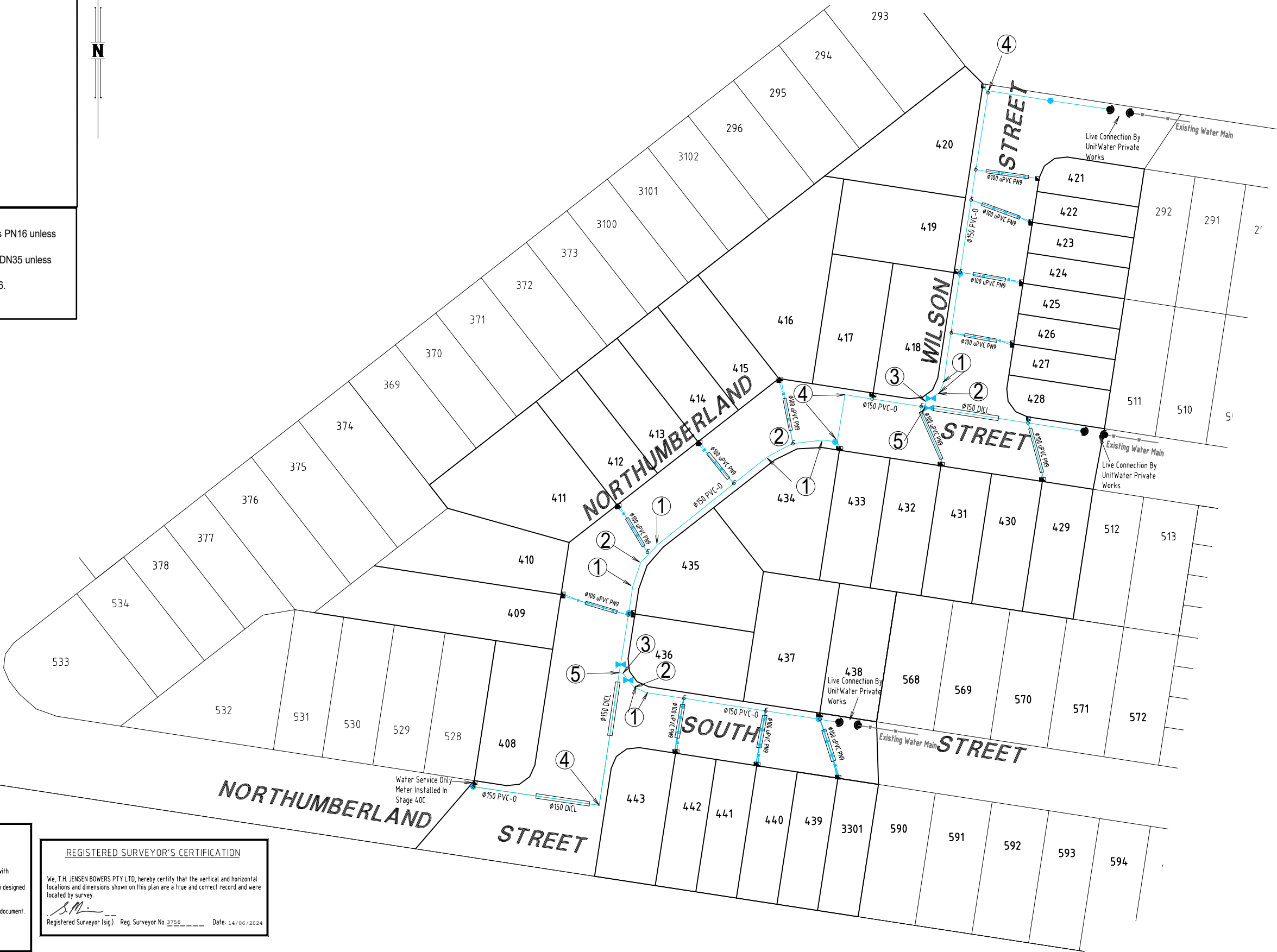
A1	INDEX	DATE	REVISIONS	DRAWN	CHECKED	PASSED	INITIALS	DATE		Unitywater 2016008075S33 North Harbour Stage 33	SHEET 1 OF 3 SHEETS	SCALE 1:1000
	A	05/05/2024	Original Issue	WK	SJM	DB		05/05/2024			REVISION DATE 05-05-2024	REVISION A

LEGEND

- ∅ Pipe Diameter
- Fire Hydrant
- Temporary Hydrant/End
- ⊕ Valve
- ① 11.25° BEND
- ② 22.5° BEND
- ③ 45° BEND
- ④ 90° BEND
- ⊕ 150 X 150 X 150 TEE
- ⊕ Ready Tap
- Water Meter
- Water Crossing
- Water Main
- DICL Water Main
- Easement

NOTES

- Water main pipes are Ø150 PVC-0 Class PN16 unless noted otherwise.
- All road crossings are Ø150 DICL Class DN35 unless noted otherwise.
- All water services are DN25 PE100 PN16.



ENGINEER'S CERTIFICATION

I, Mark Shaw, of KN GROUP PTY LTD, hereby certify that:
 1. The information contained in this drawing / document is in compliance with approved drawings and design.
 2. The new water and sewerage works defined by this drawing have been designed and constructed in accordance with the SEQ Code.
 3. This represents an accurate record of as-constructed works
 4. I accept responsibility for the information contained in this drawing / document.

RPED (signature) RPED No. 17544 Date: _____

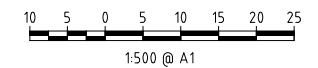
REGISTERED SURVEYOR'S CERTIFICATION

We, T.H. JENSEN BOWERS PTY LTD, hereby certify that the vertical and horizontal locations and dimensions shown on this plan are a true and correct record and were located by survey.

S.M.
 Registered Surveyor (sig) Reg. Surveyor No. 3756 Date: 14/06/2024

COORDINATE DATUM NOTE:
 HORIZONTAL COORDINATES(E,N) SUPPLIED ARE MAPPING GRID OF AUSTRALIA(MGA), ZONE 56 BASED ON THE UNIVERSAL TRANSVERSE MERCATOR PROJECTION AND THE GEOCENTRIC DATUM OF AUSTRALIA 1994.

PSM 724.18
 E: 498714.197
 N: 6999186.146
 RL: 14.859m



AS CONSTRUCTED

A1	INDEX	DATE	REVISIONS	DRAWN	CHECKED	PASSED
	A	05/05/2024	Original Issue	WK	SJM	DB

DRAWN	WK	05/05/2024
CHECKED	SJM	05/05/2024
PASSED	DB	05/05/2024

JENSEN BOWERS
 72 Coles Street, Fortitude Valley, Qld. 4006
 PO Box 799, Spring Hill, Qld. 4004
 T: (07) 3852 1711 F: (07) 3252 9818
 T.H. Jensen & Bowers Pty. Ltd. (Consulting Surveyors)
 ABN: 52 019 612 607

kn group
 111 St. George Street
 Spring Hill QLD 4000
 Ph: 3000 1000
 www.knigroup.com.au

Unitywater
 2016008075533
 North Harbour Stage 33

SHEET 1 OF 3 SHEETS	SCALE 1:1000
REVISION DATE 05-05-2024	REVISION A
DISCIPLINE CODE C	
DRAWING NO. U-2023-5207	