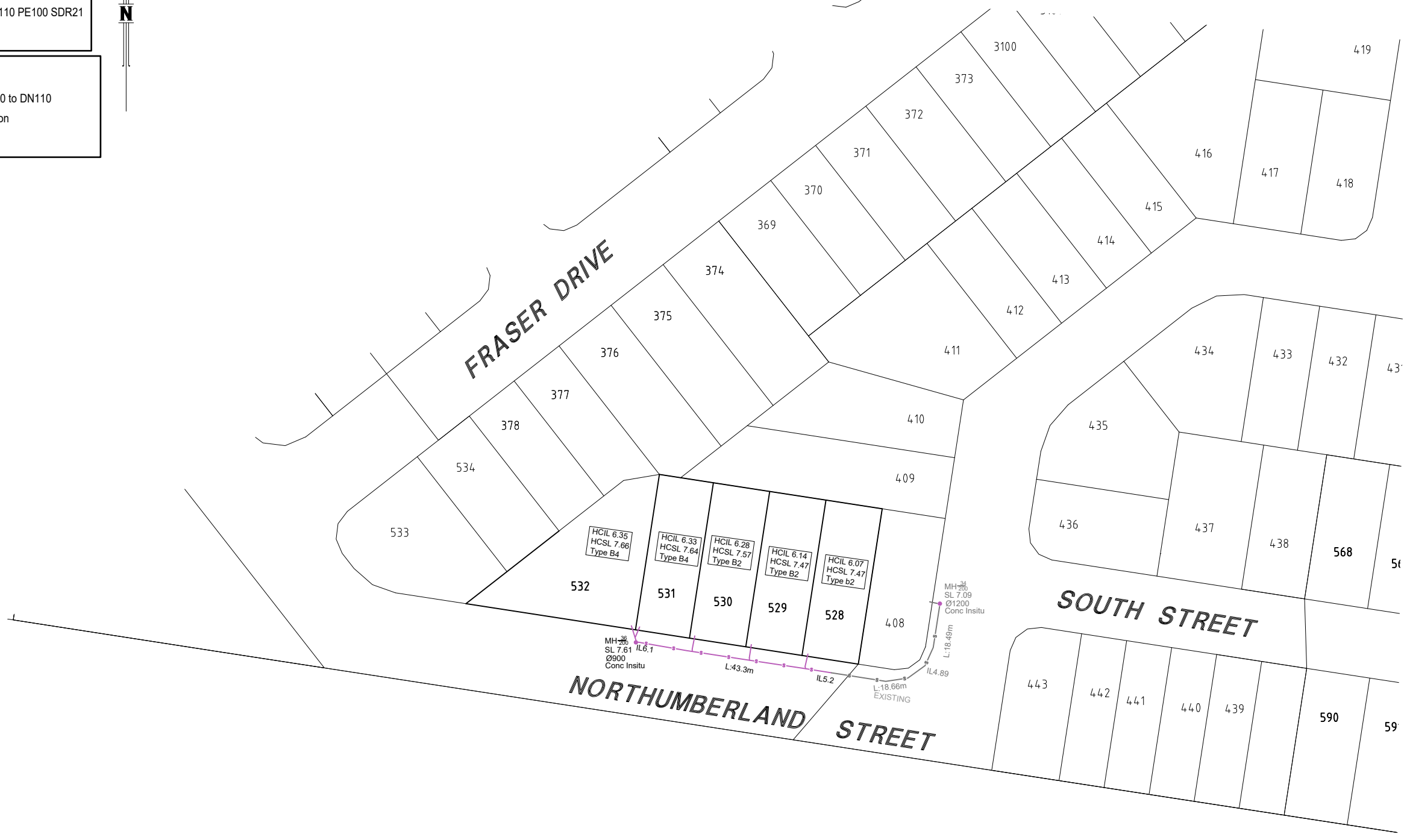


NOTES

- All Sewer Main Pipes are DN160 PE100 SDR21 PN8, White Wall.
- All Sewer House Connections are DN110 PE100 SDR21 PN8, White Wall.

LEGEND

- x Pipe Size Change from DN160 to DN110
- Y DN160/110 45 Degree Junction
- Easement Line



ENGINEER'S CERTIFICATION

I, Mark Shaw, of KN GROUP PTY LTD, hereby certify that:
 1. The information contained in this drawing / document is in compliance with approved drawings and design.
 2. The new water and sewerage works defined by this drawing have been designed and constructed in accordance with the SED Code.
 3. This represents an accurate record of as-constructed works.
 4. I accept responsibility for the information contained in this drawing / document.

RPEQ (signature) RPEQ No. 17544 Date:

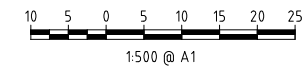
REGISTERED SURVEYOR'S CERTIFICATION

We, T.H. JENSEN BOWERS PTY LTD, hereby certify that the vertical and horizontal locations and dimensions shown on this plan are a true and correct record and were located by survey.

T.H. Jensen
 Registered Surveyor (sig) Reg. Surveyor No. 3756 Date: 14/06/2024

COORDINATE DATUM NOTE:
 HORIZONTAL COORDINATES(E,N) SUPPLIED ARE MAPPING GRID OF AUSTRALIA(MGA), ZONE 56 BASED ON THE UNIVERSAL TRANSVERSE MERCATOR PROJECTION AND THE GEOCENTRIC DATUM OF AUSTRALIA 1994.

PSM 72418
 E: 498714, 197
 N: 6999186, 146
 RL: 14.859m



AS CONSTRUCTED

A1

| | | |
|-------|------------|----------------|
| INDEX | DATE | REVISIONS |
| A | 05/05/2024 | Original Issue |

| | | |
|----------|------|------------|
| DRAWN | WJ | 05/05/2024 |
| CHECKED | SJM | 05/05/2024 |
| PASSED | DB | 05/05/2024 |
| INITIALS | DATE | |

Unitywater

2016008075540C
 North Harbour Stage 40C

SHEET 1 OF 3 SHEETS SCALE 1:1000

REVISION DATE 05-05-2024 REVISION A

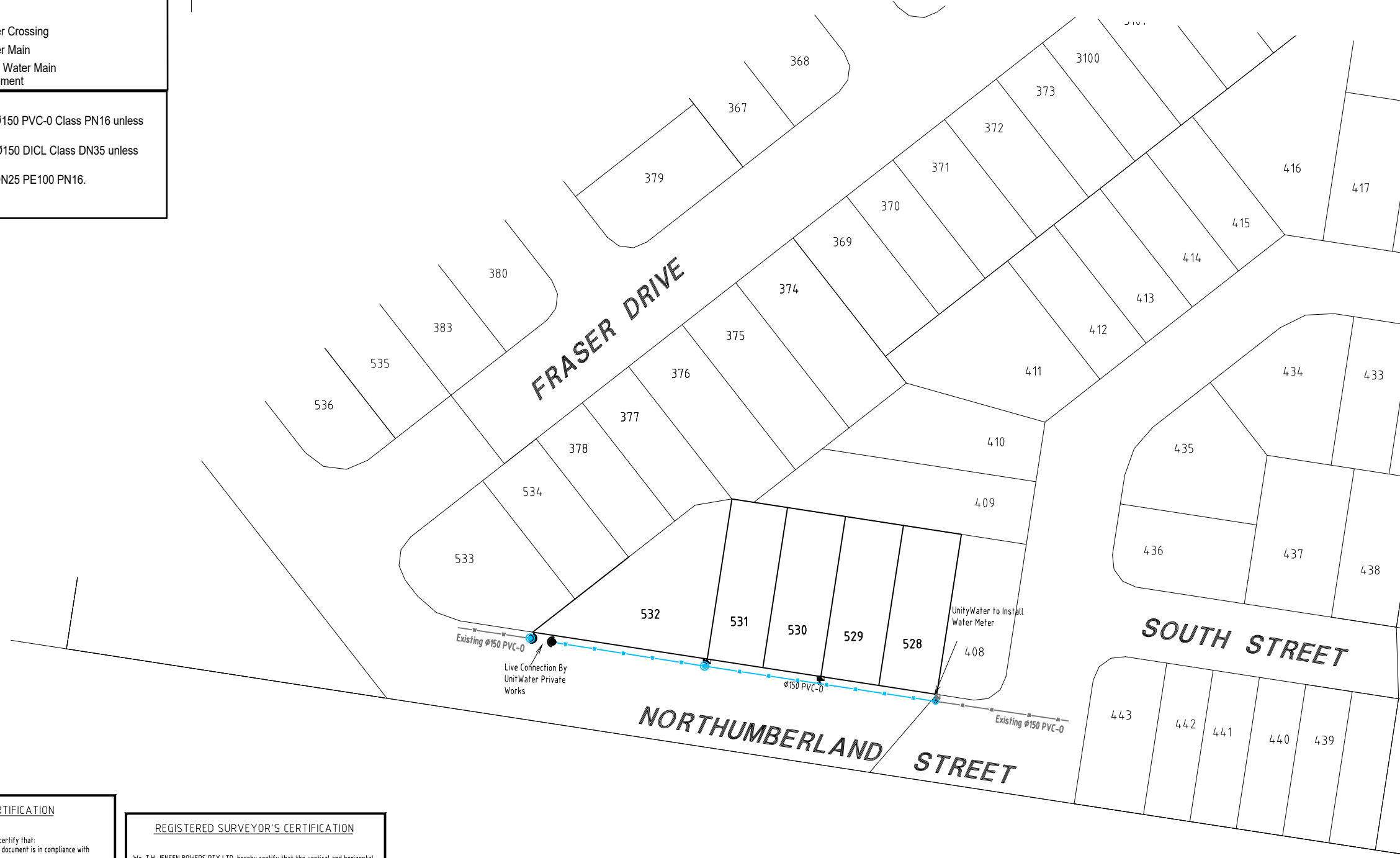
DISCIPLINE CODE C

DRAWING NO. U-2023-5193

LEGEND

- ∅ Pipe Diameter
- Fire Hydrant
- Temporary Hydrant/End
- ⊗ Valve
- ① 11.25° BEND
- ② 22.5° BEND
- ③ 45° BEND
- ④ 90° BEND
- ⊕ Ø150 X Ø150 X Ø150 TEE
- Ready Tap
- Water Meter
- Water Crossing
- Water Main
- == DICL Water Main
- - - Easement

- NOTES**
- Water main pipes are Ø150 PVC-0 Class PN16 unless noted otherwise.
 - All road crossings are Ø150 DICL Class DN35 unless noted otherwise.
 - All water services are DN25 PE100 PN16.



ENGINEER'S CERTIFICATION

I, Mark Shaw, of KN GROUP PTY LTD, hereby certify that:
 1. The information contained in this drawing / document is in compliance with approved drawings and design.
 2. The new water and sewerage works defined by this drawing have been designed and constructed in accordance with the SEQ Code.
 3. This represents an accurate record of as-constructed works.
 4. I accept responsibility for the information contained in this drawing / document.

RPED (signature) RPED No. 17544 Date: _____

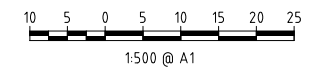
REGISTERED SURVEYOR'S CERTIFICATION

We, T.H. JENSEN BOWERS PTY LTD, hereby certify that the vertical and horizontal locations and dimensions shown on this plan are a true and correct record and were located by survey.

S.M.
 Registered Surveyor (sig) Reg. Surveyor No. 3756 Date: 14/06/2024

COORDINATE DATUM NOTE:
 HORIZONTAL COORDINATES(E,N) SUPPLIED ARE MAPPING GRID OF AUSTRALIA(MGA), ZONE 56 BASED ON THE UNIVERSAL TRANSVERSE MERCATOR PROJECTION AND THE GEOCENTRIC DATUM OF AUSTRALIA 1994.

PSM 724.18
 E: 498714.197
 N: 6999186.146
 RL: 14.859m



AS CONSTRUCTED

| | | | | | | | | | |
|-------|------------|----------------|------------|---------|--------|------------|----------|------------|------------|
| A1 | DRAWN | WJ | 05/05/2024 | DRAWN | WJ | DB | PASSED | DB | 05/05/2024 |
| | CHECKED | SJM | 05/05/2024 | PASSED | DB | 05/05/2024 | INITIALS | DATE | DATE |
| INDEX | DATE | REVISIONS | DRAWN | CHECKED | PASSED | DRAWN | CHECKED | PASSED | INITIALS |
| A | 05/05/2024 | Original Issue | WJ | SJM | DB | PASSED | DB | 05/05/2024 | DATE |

JENSEN BOWERS
 72 Coles Street, Fortitude Valley, Qld. 4006
 PO Box 799, Spring Hill, Qld. 4004
 T: (07) 3852 1711 F: (07) 3252 9818
 T.H. Jensen & Bowers Pty. Ltd. (Consulting Surveyors)
 ABRN: 52 019 812 807

Copyright reserved to Jensen Bowers Group Consultants Pty Ltd
PLANNERS DEVELOPMENT ADVISORS
 jensenbowers.com.au

kn group
 111 St. George Street, Brisbane, QLD 4000
 T: (07) 3252 1711 F: (07) 3252 9818
 www.kngroup.com.au

Unitywater
 201608075540C
 North Harbour Stage 40C

| | |
|--------------------------|--------------|
| SHEET 1 OF 3 SHEETS | SCALE 1:1000 |
| REVISION DATE 05-05-2024 | REVISION A |
| DISCIPLINE CODE C | |
| DRAWING NO. U-2023-5193 | |

| | |
|--------------------------|--------------|
| SHEET 1 OF 3 SHEETS | SCALE 1:1000 |
| REVISION DATE 05-05-2024 | REVISION A |
| DISCIPLINE CODE C | |
| DRAWING NO. U-2023-5193 | |